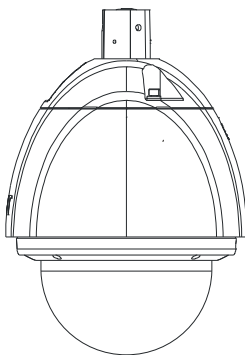


# IP Speed Dome Camera

## *User Manual*



Please read this instruction carefully for correct use of the product and preserve it for reference purposes

---

## **Disclaimer**

- ▶ This manual is provided for user reference only, without legal restraint.
- ▶ This content of this manual is subject to change without prior notice, and the updates will be added into the new version of this manual.
- ▶ This manual may contain several technically incorrect places or printing errors, please feel free to let us know. We will readily improve or update the precuts or procedures described in the manual.

## Notes on Safety

- Please use the specified power supply to connect (supports AC24V).
- Do not attempt to disassemble the camera; in order to prevent electric shock, do not remove screws or covers.
- There are no user-serviceable parts inside. Please contact the nearest service center as soon as possible if there is any failure.
- Avoid from in correct operation, shock vibration, heavy pressing which can cause damage to product.
- Do not use corrosive detergent to clean main body of the camera. If necessary, please use soft dry cloth to wipe dirt; for hard contamination, use neutral detergent. Any cleanser for high grade furniture is applicable.
- Avoid aiming the camera directly towards extremely bright objects, such as, sun, as this may damage the image sensor.
- Please follow the instructions to install the camera. Do not reverse the camera, or the reversing image will be received.
- Do not operate it incase temperature, humidity and power supply are beyond the limited stipulations.
- Keep away from heat sources such as radiators, heat registers, stove., etc.
- Do not expose the product to the direct airflow from an air conditioner. Otherwise, it may cause moisture condensation inside the clear dome due to temperature difference between internal and external of the dome camera.

# Contents

Chapter 1	Introduction.....	1
Chapter 2	Installation .....	2
Chapter 3	IE Connection .....	6
3.1.1	Access through IP-Tool .....	6
3.1.2	Directly Access through IE.....	7
Chapter 4	Remote Preview .....	10
4.1	Remote Preview .....	10
4.2	Playback .....	11
4.3	Snap.....	12
Chapter 5	Menu Setup.....	13
5.1	System Setup .....	13
5.1.1	Auto PT Flip .....	13
5.1.2	Temperature Display.....	14
5.1.3	Zoom Display .....	14
5.1.4	Language .....	14
5.1.5	Home Position Setup .....	14
5.1.6	View PTZ Version .....	14
5.2	Camera Setup .....	14
5.2.1	Camera Control .....	15
5.2.2	Image Setup.....	15
5.2.3	Focus Near Limit .....	16
5.2.4	Zoom Speed.....	16
5.2.5	DZoom.....	16
5.2.6	Video Format .....	17
5.3	Dome Function .....	17
5.3.1	Patrol Setup .....	17
5.3.2	Task Setup .....	18
5.3.3	Alarm Setup.....	19
5.3.4	Trace Setup .....	20
5.3.5	Day & Night .....	20
5.4	Load Default.....	21
Chapter 6	Remote Configuration.....	22
6.1	System Configuration.....	22

6.1.1	Basic Information .....	22
6.1.2	Date & Time Configuration.....	22
6.1.3	SD Card .....	23
6.2	Video Configuration .....	23
6.2.1	Camera Configuration .....	24
6.2.2	Video Stream .....	24
6.2.3	Time Stamp .....	24
6.3	PTZ Configuration.....	25
6.3.1	Preset Configuration .....	25
6.3.2	Cruise Configuration .....	26
6.3.3	Upgrade PTZ .....	26
6.4	Alarm Configuration .....	27
6.4.1	Motion Detection Area .....	27
6.4.2	Motion Detection Trigger .....	27
6.4.3	Motion Detection Schedule .....	28
6.4.4	Alarm Input Trigger.....	29
6.4.5	Alarm Input Schedule.....	29
6.4.6	Alarm Out.....	30
6.5	Network Configuration.....	30
6.5.1	Port .....	30
6.5.2	Wired .....	31
6.5.3	Server Configuration .....	31
6.5.4	IP Notify .....	32
6.5.5	DDNS Configuration.....	32
6.5.6	RTSP .....	34
6.5.7	UPNP.....	35
6.5.8	Mail Setting .....	36
6.5.9	FTP .....	36
6.6	Advanced Configuration .....	37
6.6.1	User Configuration .....	37
6.6.2	Onvif Configuration .....	39
6.6.3	Security Configuration .....	39
6.6.4	Configure Backup & Restore .....	40
6.6.5	Reboot Device .....	40

6.6.6 Upgrade ..... 40

Chapter 7 Video Search ..... 42

Chapter 8 Mobile Surveillance ..... 44

    8.1 Network Configuration..... 44

    8.2 By Phones with iPhone OS..... 44

    8.3 By Phones with Android OS..... 54

Chapter 9 IP-Tool ..... 59

Chapter 10 Q & A..... 62

Chapter 11 Specification ..... 64

Appendix Preset Description..... 65

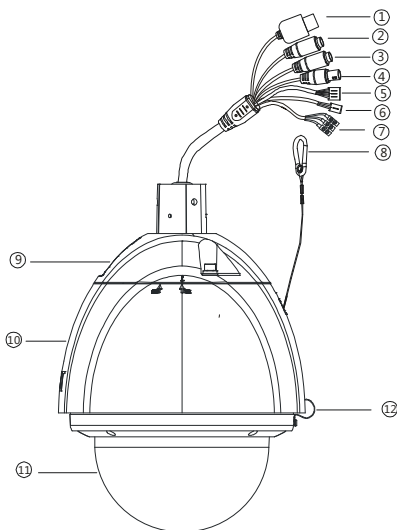
## Chapter 1 Introduction

### 1.1 Overview

This IP speed dome camera is front-end equipment used for video capture. Its digital flip technology makes omni-directional and non-blind-spot monitoring into reality. It utilizes most advanced technologies, such as video encoding and decoding technology, and complies with the TCP/IP protocol, SoC., etc, to ensure this system more stable and reliable. This unit consists of two parts: the IP-CAM device and central management software (short for CMS). This CMS centralizes all devices together via internet or LAN and establishes a sound surveillance system to realize unified management and remote operation to all devices in one network.

This product is widely used in banks, telecommunication systems, electricity power departments, law systems, factories, storehouses, uptowns., etc. In addition, it is also an ideal choice for surveillance sites with middle or high risks.

### 1.2 Interfaces and Parts



1 LAN	2 HP Audio Out	3 MIC In
4 CVBS Video Out	5 Alarm In/Out	6 RS485
7 Power Supply	8 Steel Wire	9 Base Tray
10 Outer Cover	11 Transparent Cover	12 Buckle

## Chapter 2 Installation

### 2.1 Install Camera

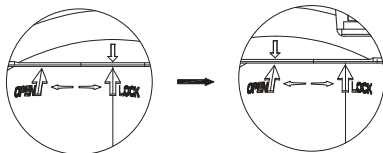


**Caution :** Please make sure the wall is able to bear the dome camera's weight.  
Please make sure the dome camera is powered off during installation.

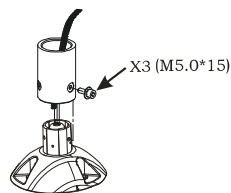
The installation steps are as follows:

**Step 1:** Disassemble the dome camera.

- ① Loosen the fixing screws and separate the body from the base tray as shown in Fig 1.
- ② Loosen three screws and separate the tube from the base tray as shown in Fig 2.



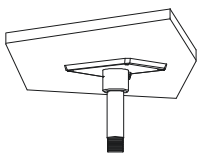
(Fig 1)



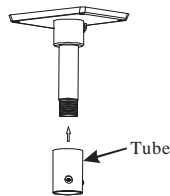
(Fig 2)

**Step 2:** Install the frame.

- ① Fix the frame on the wall by using bracket, nuts or other similar parts as shown in Fig 3.
- ② Fasten the tube to the frame as shown in Fig 4.

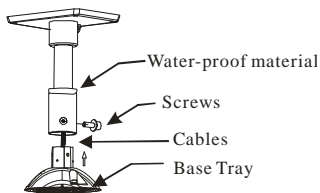


(Fig 3)



(Fig 4)

- ③ Pull the cables through the frame, fix the base tray to the tube with fixing screws and fill the gap between the frame and tube with water-proof materials.



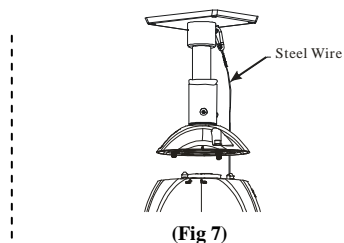
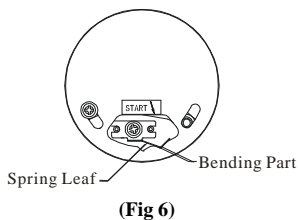
(Fig 5)



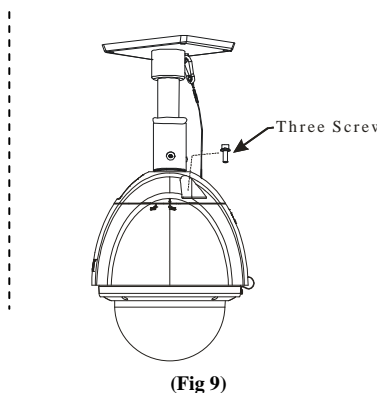
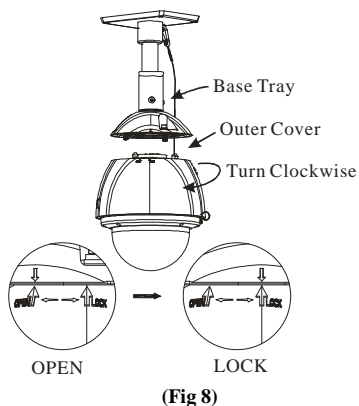
# Chapter 2 Installation

## Step 3: Install Camera.

- ① Make the arrow of “START” point to the bending part of the spring leaf as shown in Fig 6.
- ② Hook the steel wire on the frame as shown in Fig 7.



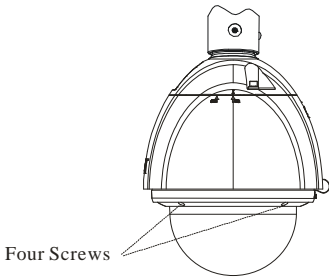
- ③ Ressemble the base tray with the body. Move the camera upwards and make the guide pins match with the guide holes. Turn the camera clockwise to fasten as shown in Fig 8. Fasten three screws as shown in Fig 9.



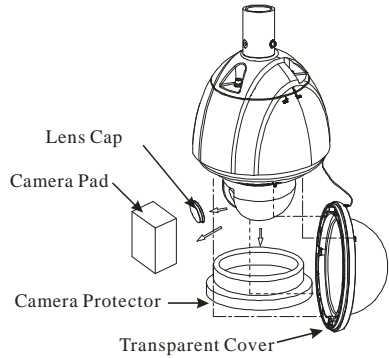
## Step 4 : Remove the protector.

- ① Loosen four screws under the bottom cover as shown in Fig 10.
- ② Remove the protective material and lens cap, reassemble the transparent cover with the body and fasten the screws as shown in Fig 11.

# Chapter 2 Installation

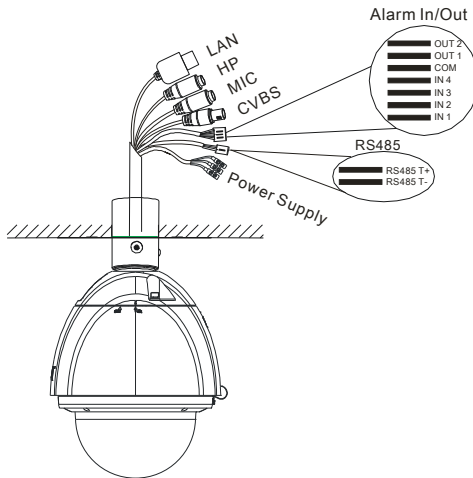


( Fig 10 )

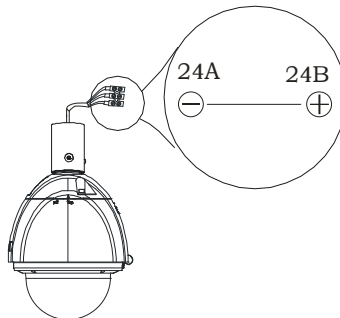


( Fig 11 )

## 2.2 Connection



### ● Power Connection



AC 24V

## Alarm Connection:

### Alarm Input:

- a) There are four independent alarm input ports (ALM-IN1~4) and one common port (ALM-COM).
- b) There are three alarm input status: “OFF/NC/NO”. If “OFF” is selected, the system will not check the status of the IN x and IN\_COM. If “NO” is selected, connect DC 5V~DC12V voltage between the alarm input port ALM-In x (x=1~4) and the common port (ALM-COM) to trigger the alarm. If “NC” is selected, disconnect the voltage between alarm input ports (ALM-IN1~4) and common port (ALM-COM) to trigger the alarm.

### Alarm Output:

- a) Supports 1 CH alarm output including OUT1, OUT2 connections.
- b) Options: OFF, IN1, IN2, etc. If the OFF is selected, no alarm can be output. If other statuses are selected, such as IN1, IN2, etc., the alarm can be output only when the corresponding alarm input triggers the alarm.
- c) One passive switch for user to connect alarm devices.

### RS485 Connection:

You can connect keyboard or analog/SDI speed dome to the RS485 interface by switching between alarm in and alarm out in menu setup.

- a) When alarm in is selected, you can connect keyboard to the RS485 interface.
- b) When alarm out is selected, you can connect an analog or SDI speed dome to the RS485 interface.

## 2.3 CMS Installation

Find CMS software from CD and then double click “Setup.exe” file to pop up installation wizard.

Install the software according to the prompts in the wizard. After you complete the installation, you will see the CMS and IP-Tool icon on the desktop. Please see the user manual of this software for more details.

If you need to install IP-Tool separately, please double click IP-Tool installation package and install it according its wizard prompts. After you finish installing, double click IP-Tool icon to start IP-Tool.

# Chapter 3 IE Connection

## Chapter 3 IE Connection


IP-Cam can be connected through LAN or WAN. Here only take IE browser (6.0) for example. The details are as follows:

### 3.1 LAN

In LAN, there are two ways to access IP-CAM : ① Access through IP-Tool ; ② Directly Access through IE Browser.

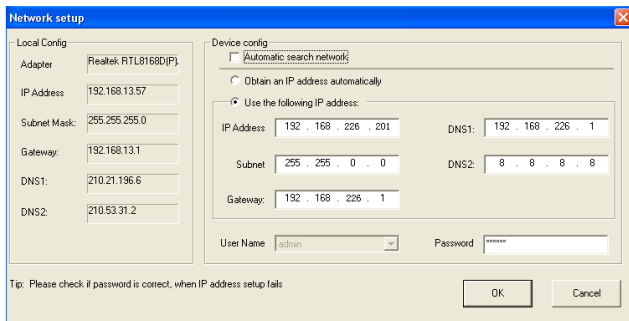
#### 3.1.1 Access through IP-Tool

**Step 1:** Make sure the PC and IP-Cam are connected to the LAN and the IP-Tool is installed in the PC from the CD.

**Step 2:** Use IP-Tool to modify the network of IP-Cam. Then, double click the  icon on the desktop to run this software as shown below:

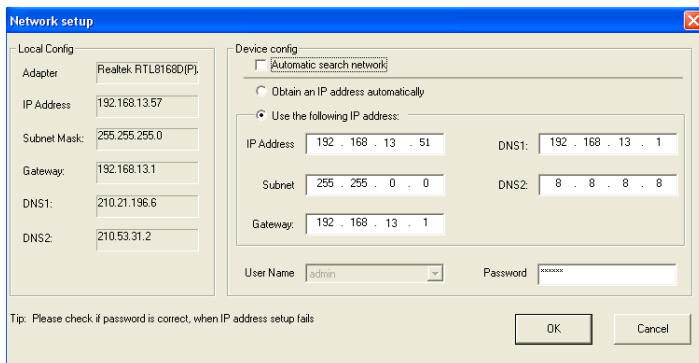


After starting IP-Tool and clicking the IP-Cam in the list, you can check the information of IP-Cam. If you cannot confirm which one is yours, please shut off the electricity of the IP-Cam and then power on it. When shutting off the power, the device information will disappear. When powering on, the device information will emerge. Well, this device is the used device. Right click the device information and select “network setup”. Then the network setup window will pop up as shown below:



# Chapter 3 IE Connection

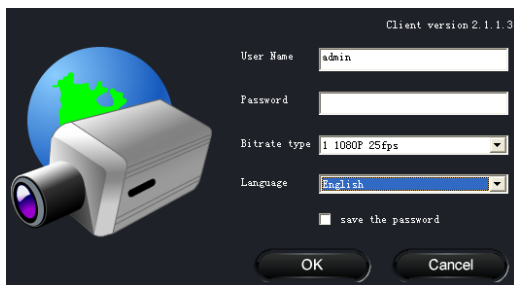
For example, the IP address of this computer is 192.168.13.57. So, please modify the IP address and Gateway of the IP-Cam which must be in the same local network with the computer's. After modifying, please input the user name and password and then click "OK" button to save the setting.



**Note:** The default user name is: admin. The default password is: 123456. The new IP address of this device will display after modification.

**Step 3:** Use the IP-Tool to login the IP-Cam.

Right-click the IP address and select "browse with IE". Then the system will pop up the IE browser to connect IP-Cam as shown below. IE browser will auto download the Active X control. After finishing the installation of the Active X control, a login window will pop up.



Input User name and password and then click "OK" button to login.

**Note:** You can also use the modified IP address of the IP-Cam. Input the IP address in the IE browser bar and then click "Enter" to access IP-Cam. The default user name is admin. The default password is 123456.

## 3.1.2 Directly Access through IE

The default network settings are as shown below:

IP address: **192.168.226.201**

Subnet Mask: **255.255.255.0**

# Chapter 3 IE Connection

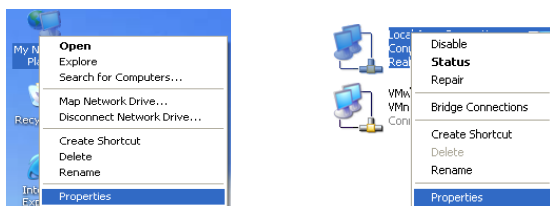
Gateway: **192.168.226.1**

HTTP: **80**

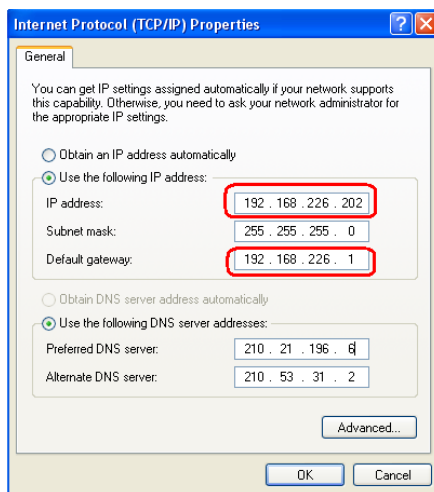
Data port: **9008**

The first time you used the network speed dome, you should connect the device with the above default settings.

**Step 1:** Manual setup the IP address of the PC, the network segment should be as same as the default settings of IP-CAM. Right click “My Network Places” icon on the desktop and then select “Properties” as shown in the left figure. Right click “Local Area Connection” at the popup window, followed by selecting “Property” as shown in the right figure.



Select “Internet Protocol (TCP/IP)” in the “General” tabs. Then click “Properties” to manual input network address information of the PC in the pop up window. Refer to the following figure:



**Step 2:** Open the IE Browser and input the default address of IP-CAM and confirm. Then the IE browser will download Active X control automatically.

**Step 3:** After downloading Active X control, the login dialog box will pop up as below:

**Step 4:** Input user name and password in the login dialog box and click “OK” button to enter into the live interface. You can manage and setup the IP-CAM, such as change IP address etc.

# Chapter 3 IE Connection

## 3.2 WAN

### Access through router or virtual server

**Step 1:** Connecting according to above steps in LAN; Enter into System Configuration→Network configuration→Basic configuration to setup the port number as shown in the picture on the left hand.

**Step 2:** Enter into System Configuration→Network configuration→IP configuration to change IP address as shown in the picture on the right hand.

Network basic config

HTTP Port

Data Port

Port Setup

Auto search network

Auto search network

IP Config

Obtain an IP address automatically

Use the following IP address

IP Address	192 . 168 . 1 . 202	Gateway	192 . 168 . 1 . 1
Subnet Mask	255 . 255 . 255 . 0	Preferred DNS server	192 . 168 . 226 . 1
		Alternate DNS server	8 . 8 . 8 . 8

PPPoE Config

PPPoE

User Name  Password

IP Setup

**Step 3:** Enter into the router's management interface through IE browser and forward the IP address and port of IP-CAM in the “virtual server” (The name depends on the router).

Port Range					
Application	Start	End	Protocol	IP Address	Enable
1	9008	to 9008	Both	192.168.1. 202	<input checked="" type="checkbox"/>
2	80	to 81	Both	192.168.1. 202	<input checked="" type="checkbox"/>
3	10000	to 10001	Both	192.168.1. 166	<input type="checkbox"/>
4	21000	to 21001	Both	192.168.1. 156	<input type="checkbox"/>
5	7777	to 7778	Both	192.168.1. 206	<input type="checkbox"/>
6	1029	to 1030	Both	192.168.1. 207	<input type="checkbox"/>

Router Setup

**Step 4:** Open the IE browser and input its WAN IP and http port to access.

## Chapter 4 Remote Preview

### 4.1 Remote Preview

After you log in, you will see the following window.



The descriptions of the icon on the remote preview interface:

Icon	Description	Icon	Description
	Motion alarm indicator icon		Sensor alarm indicator icon
	Fix size		Start/Stop record
	Actual size		Playback
	Zoom in		Snap
	Zoom out		Talk
	Full screen		Open/close audio

Right click mouse to appear a pull-down list:

**Stream:** 1080P, 720P, VGA, QVGA.

**Turn off the live:** Click this item to close the current live preview.

**Enable audio:** Enable remote audio transmission.

**Full screen:** To open full screen display. Double click or click right mouse to return to the previous interface.

**Online user:** To display the number of the online users accessing the device.


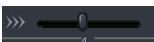



**System information:** Display the device information.



# Chapter 4 Remote Preview


Click PTZ extended button to unfold PTZ control panel. In remote preview interface, you can view the image from every direction by controlling PTZ panel.

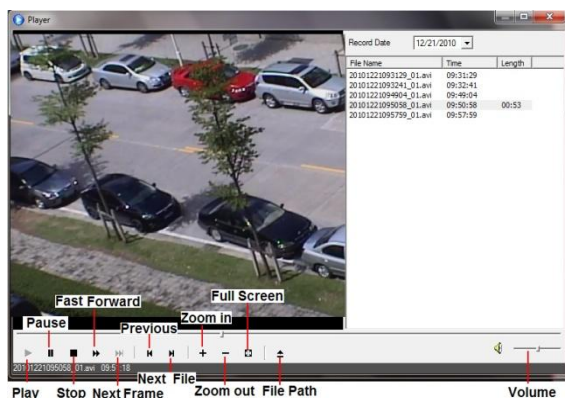
The descriptions of the control panel are as follows:

Button	Description
	<ul style="list-style-type: none"> <li>▲ to rotate the dome upwards ; ▼ to rotate the dome downwards;</li> <li>◀ to rotate the dome towards left; ▶ to rotate the dome towards right ; ↖ to rotate the dome diagonally up-left; ↗ to rotate the dome diagonally up-right; ↙ to rotate the dome diagonally down-left; ↘ to rotate the dome diagonally down-right; □ to stop rotating the dome.</li> </ul>
	Drag the scroll bar to adjust rotating speed of the dome.
	Focus button. Click + button to have long focus and click - to have short focus so that you can adjust the image clearly.
	Zoom button. Click + to zoom in the image; click - to zoom out the image.
	Iris button. Click + to increase light of the dome; click - to decrease light of the dome.

Enter digital number and then click **【Call】** button to call the preset. If wrong, click **【ESC】** to clear and enter the right number again. Enter digital number and click **【Del】** to delete the preset. Enter digital number and move the dome to adjust the position of the preset and then click **【Set】** to set the preset.

## 4.2 Playback

Click  icon to see the following window:

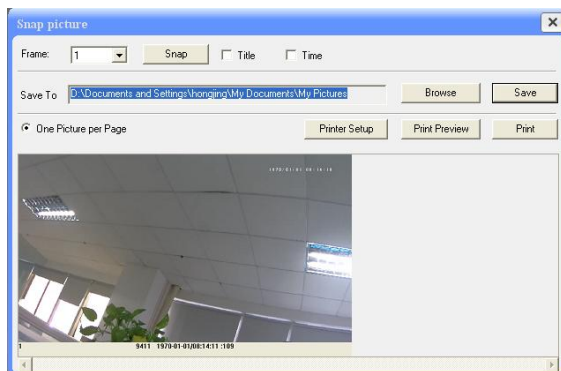


# Chapter 4 Remote Preview

After selecting the record date, the record files will be displayed in the record file list box. Double click a certain record file to playback or check a certain file. Then click Play button to play.

## 4.3 Snap

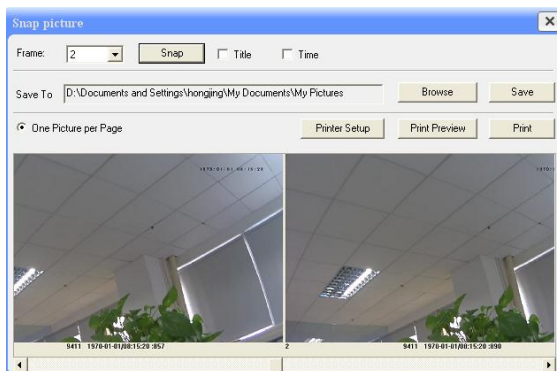
Select the picture number and then click “Snap”  icon as shown below:



To snap multiple pictures:

Step 1: Select the picture number from frame pull down list box, such as 2.

Step 2: check “Title” and “Time” to show capture title and time on the snap pictures simultaneously.



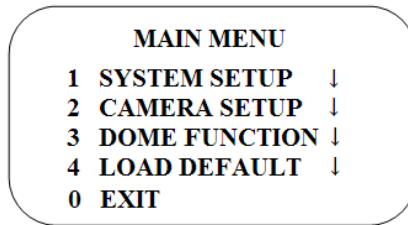
Step 3: Click “Browse” to set saving path and then click “Save” to save pictures to HDD on the computer;





Step 4: Click “Snap” button to take snapshots.



Step 5: Drag the scroll bar to view all snapped pictures.


## Chapter 5 Menu Setup


Under the PTZ control panel of IE remote preview interface, click number 9 and 5 and then click [Call] button to Call No.95 preset. Now, you can see main menu setup as shown below.



After you enter the main menu interface, you can select the menu by clicking the direction button ().

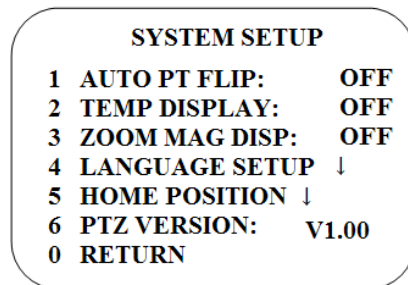
 : To select menu by moving up and down.

 : To return to the menu on the left.








 : To confirm to enter sub-menu or to select the menu on the right.

### 5.1 System Setup

Select System Setup by clicking  or  button and then click  button to enter into System Setup as shown below:



#### 5.1.1 Auto PT Flip

Select Auto PT Flip and then click  to setup the menu on the right; click  or  button to select On/Off. If “On” is selected, please click  button to return to the menu on the left and click  button to select Return. Next, click  button to return to the main menu. Then click  button to select Exit. Now, you will see the remote preview interface. (The ways to go into sub-menu, return or exit to the main menu in the following settings are similar to the above-mentioned steps. The following contents will not introduce it in detail).

# Chapter 5 Menu Setup

After you exit the main menu, press and hold  button to let the speed dome move to the bottom so that the dome will auto flip.

## 5.1.2 Temperature Display

After enabling temperature and exiting the main menu setup, the temperature will display on the remote preview image.

## 5.1.3 Zoom Display

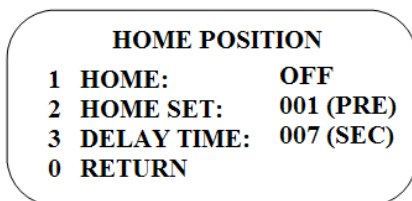
If you select “ON”, the zoom information will be displayed on the remote preview image.

## 5.1.4 Language

This device supports English and Chinese Menu.

## 5.1.5 Home Position Setup

Enter Main Menu → System Setup → Home Position Menu as shown below:



### The setting steps:

Enable the home position function and select the preset which should be set in advance. Then select delay time (range from 007s to 180s) and exit the menu.

When the stand-by time of the dome camera exceeds the delay time, the camera will automatically execute the command to monitor the selected preset.

## 5.1.6 View PTZ Version

Enter Main Menu → System Setup menu to check the PTZ version.

## 5.2 Camera Setup

After you enter camera setup menu, you will see the following screen.

Camera setup includes the settings of camera control, image setup, focus near limit, zoom speed, DZoom and PAL/NTSC.

# Chapter 5 Menu Setup

## CAMERA SETUP

- 1 CAMERA CONTROL ↓
- 2 IMAGE SETUP ↓
- 3 FOCUS NEAR LIMIT 1.5M
- 4 ZOOM SPEED 7
- 5 DZOOM: ON
- 6 PAL/NTSC: PAL
- 0 RETURN

### 5.2.1 Camera Control

## CAMERA CONTROL

- 1 BLC: OFF
- 2 HLC: OFF
- 3 HLC LEVEL: 20
- 4 3D-DNR: HIGH
- 5 COLOR LEVEL: 06
- 6 SHARPNESS: 10
- 7 IMAGE FLIP: OFF
- 8 GAMMA: DEFAU
- 0 RETURN

**【BLC】** : When the background light is so stronger that the foreground is dark, the brightness of the whole image will improve thereby enhancing the visibility of the foreground image if the BLC function is enabled.

**【HLC】** : If enabled, the darker part will be lightened, while the highlight part will be suppressed.

**【HLC Level】** : Range from 00~20.

**【3D-DNR】** : Reduce the noise of the brightness and chroma of the image in low illumination condition.

**【Color Level】** : Adjust the screen color.

**【Sharpness】** : Set the image definition.

**【Image Flip】** : Flip the image.

**【Gamma】** : Measurement of the contrast of an image.

### 5.2.2 Image Setup

## IMAGE SETUP

1	<b>BRIGHTNESS:</b>	12
2	<b>AGC:</b>	16
3	<b>SHUTTER MODE:</b>	AUTO
4	<b>SHUTTER:</b>	00
5	<b>WB MODE:</b>	AUTO
6	<b>MWB RED GAIN:</b>	10
7	<b>MWB BLUE GAIN:</b>	10
8	<b>DAY NIGHT MODE:</b>	AUTO
0	<b>RETURN</b>	

【Brightness】 : Range from 0 ( darkest ) ~20 ( brightness ) .

【AGC】 : The larger the number is, the higher the brightness and the more the noises of the image are.

【Shutter Mode】 : Two modes can be optional. Manual & Auto.

【Shutter】 : The lower the value of camera shutter is, the brighter the image is. It is available only when the shutter mode is set to manual mode.

【WB Mode】 : White Balance Mode. There are two options you can choose including auto and manual. You can select the mode according to different lighting condition.

【MWB Red Gain】 : The operation is effective only when the white balance is in manual mode.

【MWB Blue Gain】 : The operation is effective only when the white balance is in manual mode.

【Day Night Mode】 : Three options: Auto, Day & Night.

- ❖ Auto : Camera will automatically switch the mode between day and night as per the ambient illumination.
- ❖ Night : The camera will be night mode at all time. You'd better use this mode at night.
- ❖ Day: The camera will be day mode at all time. You'd better use this mode in daytime.

### 5.2.3 Focus Near Limit

Set the nearest distance of focus.

### 5.2.4 Zoom Speed

Adjust zoom speed.

### 5.2.5 DZoom

To turn on/off the digital zoom. After enabling digital zoom mode, digital zoom will be increased on the basis of optical zoom.

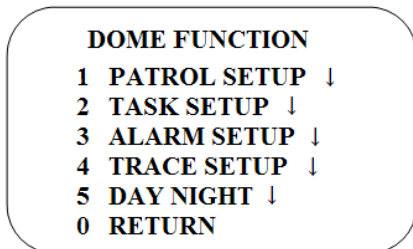
# Chapter 5 Menu Setup

## 5.2.6 Video Format

To choose video format: PAL or NTSC.

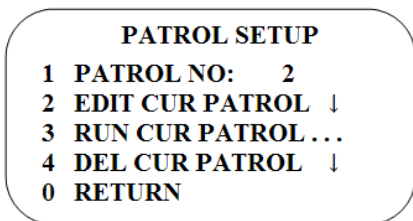
## 5.3 Dome Function

Dome function includes five sub-menus: Patrol Setup, Task Setup, Alarm Setup, Trace Setup, Day Night.



### 5.3.1 Patrol Setup

Enter Main Menu→Dome Function→Patrol Setup as below:



In this interface, by programming presets in patrol list in advance, the system will keep calling those presets at the set time in sequence when executing patrol command so that non-stop monitoring between multiple important positions can be achieved.

Setting Steps are as follows:

Step 1: Select the patrol number.

Step 2: Edit current patrol. This camera supports 8 patrols and 16 presets for each patrol.

Enter "Edit Current Patrol" menu as shown below:

# Chapter 5 Menu Setup

## FORMAT: PRENO/TIME (SEC)

01: 000/005	02:000/005
03: 000/005	04:000/005
05: 000/005	06:000/005
07: 000/005	08:000/005
09: 000/005	10:000/005
11: 000/005	12:000/005
13: 000/005	14:000/005
15: 000/005	16:000/005

**CALL 1 TO STORED**  
**CALL 2 TO CANCEL**

Set the preset and time. The preset ranges from 001 to 255 and the dwell time is from 05s to 240s.

Step 3: Run the current patrol. The camera will automatically keep running according to the patrol you set until new command is received. The corresponding operating information will display on the screen when the camera is running.

Step 4: Call preset 1 to save the setting.

## 5.3.2 Task Setup

Enter Main Menu → Dome Function → Task Setup Menu as shown below:

### TASK SETUP

1 TASK :	OFF
2 TASK SETTING	↓
3 DELETE TASK	↓
0 RETURN	

By dividing 24 hours into several periods and appointing different commands for each period, the camera system will automatically execute the commands according to the set time if there is no operation.

Setting Steps:

Step 1: Enable the task.

Step 2: Edit task. Set the task time and type.

Time Format: Start Time – End Time. The tasks will be automatically executed in chronological order.

Task Type: RST, ASC, PRE, PAT, TRA.



**Note:** The home position function will be disabled if enabling task setting.



## TASK SETTING

1 09:00 - 10:00 RSC : 00  
2 00:00 - 00:00 NON : 00  
3 00:00 - 00:00 NON : 00  
4 00:00 - 00:00 NON : 00  
5 00:00 - 00:00 NON : 00  
6 00:00 - 00:00 NON : 00  
7 00:00 - 00:00 NON : 00  
8 00:00 - 00:00 NON : 00  
CALL 1 TO STORED  
CALL 2 TO CANCEL

### 5.3.3 Alarm Setup

Enter Main Menu→Dome Function→Alarm Setup as shown below:

## ALARM SETUP

1 IN 1 ALARM: OFF  
2 IN 1 CALL: 001  
3 IN 2 ALARM: OFF  
4 IN 2 CALL: 002  
5 IN 3 ALARM: OFF  
6 IN 3 CALL: 003  
7 NEXT SETUP ↓  
0 RETURN

Setting Steps:

Step 1: Enable “IN1 Alarm”. This means the first channel is allowed to input alarm, otherwise it is prohibited to input alarm.

Step 2: Select the preset that the system will call on IN1 alarm. When the first channel alarm is triggered, the camera will automatically monitor the selected preset. The steps to set IN2 Alarm, IN3 Alarm and IN4 Alarm are the same with that of IN1 Alarm.

Step 3: Enter the next screen setup for alarm output and out condition setup. When the alarm output raises the alarm, the alarm information of the corresponding channel will display on the screen.

## ALARM SETUP

1 IN 4 ALARM: OFF  
2 IN 4 CALL: 004  
3 ALARM OUTPUT: OFF  
4 OUT CONDITION: ANY  
0 RETURN

# Chapter 5 Menu Setup

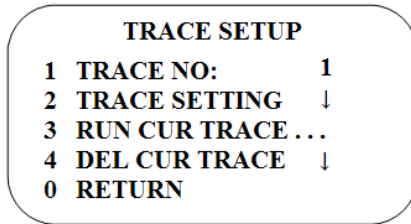
Alarm Priority: The higher the channel number is, the lower the priority level is. For example, IN 1 Alarm is higher than IN2 Alarm, so on and so forth. If high priority channel and low priority channel trigger alarm simultaneously, the preset of the latter will not be called, but if you have set the alarm output for the latter, its alarm information will be displayed. For example, when IN1 alarm is on, IN2 alarm almost triggers alarm at the same time and IN2 alarm in “Out Condition” is enabled, the alarm information of IN2 alarm channel is allowed to output but the preset of it will not be called.



**Note:** If the dome is on the menu state on an alarm, any command is negative.

## 5.3.4 Trace Setup

Enter Main Menu → Dome Function → Trace Setup Menu as shown below:



This function is used to memorize the operation to PTZ, zoom and focus so that repeating operation progress can be realized by running trace.

Setting Steps:

Step 1: Choose the trace number.

Step 2: Edit the trace. Enter the trace setting menu. Control the dome movement by direction button and then call preset 1 to save the setting. Each trace can record up to 180s. If the time exceeds 180s, the system will automatically save the operation data and return to the previous menu. In addition, 360 commands can be record for each trace at most. If exceeding 360 commands, the system will automatically save the first 360 commands and then exit the current menu. The recording time is related to the operating frequency. The more frequent the operation is, the shorter the memory time is.

Step 3: Select “RUN CUR TRACE...” to perform the command.

## 5.3.5 Day & Night

Enter the Main Menu → Dome Function → Day Night menu as below:

**DAY NIGHT**  
**1 DAY NIGHT: ON**  
**2 BW ON TIME:**  
**19 : 00**  
**3 COLOR ON TIME:**  
**07 : 00**  
**CALL 1 TO STORED**  
**CALL 2 TO CANCEL**

Enable “Day & Night” and respectively set the B/W time and color time. Call preset 1 to save the setting. Then the camera will automatically switch from B/W to color at the set time.



**Note:** Day & Night Mode will be disabled in image setup if enabling this function.

## 5.4 Load Default

There are three menus including master reset, master clear and system reboot.

**【Master Reset】** : Restore the camera state and active menu to factory default but do not clear those parameters such as preset patrol.

**【Master Clear】** : Restore the camera to factory default.

**【System Reboot】** : Reboot the camera.

## Chapter 6 Remote Configuration

Functions of remote configurations include: System Configuration, Video Configuration, PTZ Configuration, Alarm Configuration, Network Configuration and Advanced Configuration. You should firstly select the menu on the left, and then setup the relative parameters. When one user configures parameters of a certain device, other users can not setup this device.

### 6.1 System Configuration

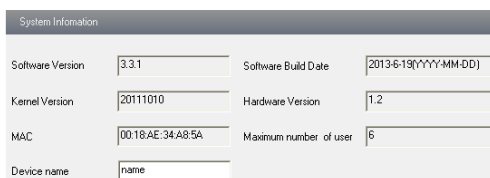
The “System configuration” includes three submenus: Basic Information, Date & Time and SD card.

#### 6.1.1 Basic Information

In the Basic Information interface, you can setup the device name and check the relative information of the server.

Setting steps:

1. Clicking the "Config" icon will appear the menu list.
2. Clicking the “Basic Information ”will pop up a window as shown below:



System Information	
Software Version	3.3.1
Software Build Date	2013-6-19(YYYY-MM-DD)
Kernel Version	20111010
Hardware Version	1.2
MAC	00:18:AE:34:A8:5A
Maximum number of user	6
Device name	name

<i>Parameter</i>	<i>Meaning</i>
Software version	The software of the device
Software build date	The software build date of the device
Kernel version	The kernel version of the device
Hardware version	The hardware version of the device
Mac Address	MAC address of device
Maximum number of user	Support max 6 users to access
Device name	Name of the device.

#### 6.1.2 Date & Time Configuration

Setting steps:

1. Enter into "System Configuration" → “Date & Time”.

# Chapter 6 Remote Configuration

Date and Time setting

Set manually: 6/ 5/2013 5:01:37 PM  Modify time

Time Zone: (GMT) Greenwich Mean Time : Dublin, Edinburgh, Lisbon, London

Daylight setting

DST Enable

DST Mode: Week Mode Time offset: 1

Start month: Jan End month: Jan

First: Sun First: Sun

Start Time: 12:00:00 AM End Time: 12:00:00 AM

NTP server setting

Synchronize with NTP Server

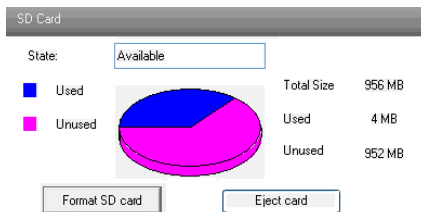
NTP Server: time.windows.com

2. Select "Modify Time " to self-define time. Choose "Time Zone" according to your location.
3. Enable DST and set DST mode and time.
4. Setup time by selecting the "Synchronize with NTP Server".
5. Press the "Save" button to save the settings.

## 6.1.3 SD Card

### Setting steps:

1. Enter into "System Configuration" → "SD Card" as shown below:



The first time you used the SD card, you should click "Format SD card".

Click "Eject card" to stop writing data to SD card. Then the SD card can be ejected safely.



**Note:** Using of SD card function should be coordinated with Motion alarm. When alarm is triggered, the system will automatically snap picture and save the picture into SD card.

## 6.2 Video Configuration

Camera Configuration includes three submenus: Camera Configuration, Video Stream and

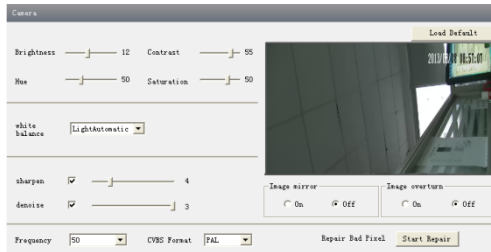
# Chapter 6 Remote Configuration

Time Stamp.

## 6.2.1 Camera Configuration

Setting steps:

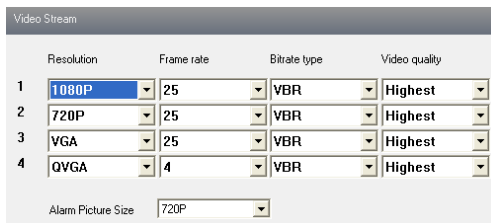
1. Enter into "Video Configuration" → "Camera" interface as shown below:



2. Adjust Brightness, Contrast, Hue and saturation of the picture.
3. Select white balance mode.
4. Sharpen, denoise, frequency and CVBS format are adjustable.
5. Enable the image mirror and image overturn function.
6. Repair bad pixel by clicking "Start Repair" button.
7. Press the "Save" button to save the settings.

## 6.2.2 Video Stream

Enter into "Video configuration" → "Video Stream" to see an interface as shown below:

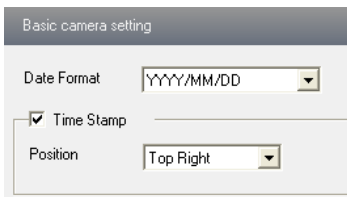


In this interface, you can set up the resolution, frame rate, bitrate type and video quality and so on subject to the network bandwidth.

## 6.2.3 Time Stamp

Enter into "Video configuration" → "Time Stamp" to display the interface as shown below:

# Chapter 6 Remote Configuration



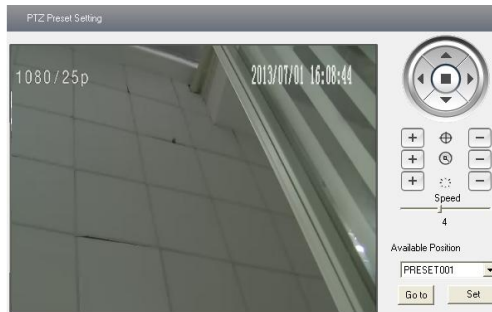
Here you can set date format and the position of the time stamp shown in the live image.

## 6.3 PTZ Configuration

PTZ Configuration includes three submenus: Preset, Cruise and Update PTZ Configuration.

### 6.3.1 Preset Configuration

1. Enter into "PTZ Configuration" → "Preset" to see an interface as shown below:



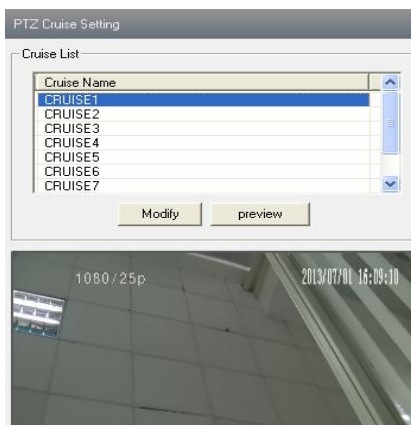
Button	Meanings
	▲ to rotate the dome upwards; ▼ to rotate the dome downwards; ◀ to rotate the dome towards left; ▶ to rotate the dome towards right; ■ to stop rotating the dome.
	Focus button. Click  button to have long focus; click  button to have short focus.
	Zoom button. Click  button to zoom in the locale picture ; click  button to zoom out the locale picture.
	Iris button. Click  button to increase light of the dome; click  button to decrease the light of the dome.
	Drag the scroll bar to adjust rotating speed of the dome.

2. Select the preset and move the dome by controlling the PTZ control panel on the right to set the position of this preset. Then click “Set” button to confirm its position.
3. Click “Save” button to save the settings.
4. Select the preset and click “Go to” to check the position of the preset.

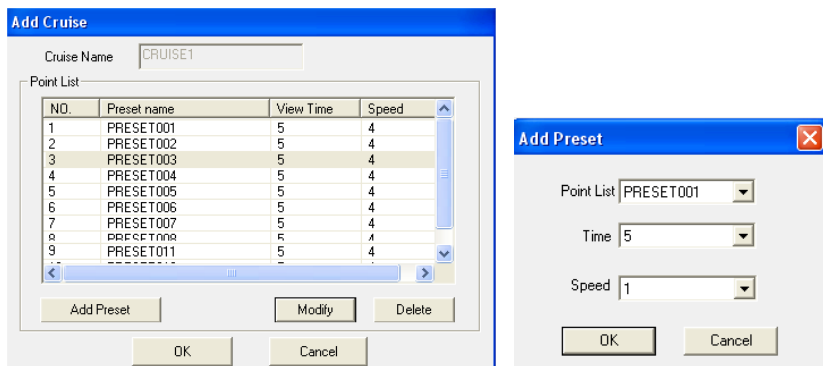
# Chapter 6 Remote Configuration

## 6.3.2 Cruise Configuration

Enter into "PTZ Configuration" → "Cruise" to display an interface as shown below:



There are 8 cruise lines by default. Choose a cruise and click "Modify" button to pop up a window as below:



You can add 16 presets into this cruise at most. Select the preset and click "Modify" to change the preset. Click "Delete" button to delete this preset point.

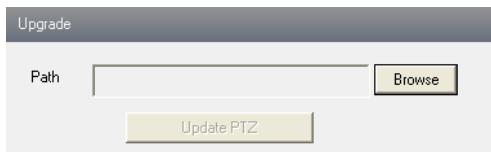
4. Press the "Save" button to save the settings.

## 6.3.3 Upgrade PTZ

Enter into "PTZ Configuration" → "Update PTZ" to display an interface as shown below:



# Chapter 6 Remote Configuration



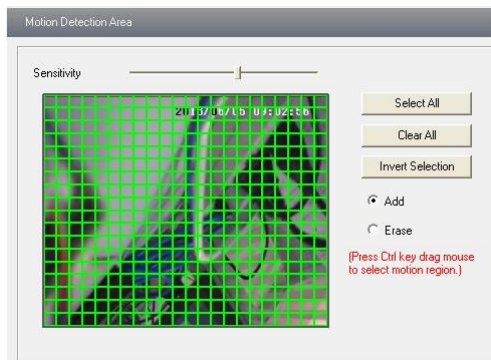
Acquire the upgrade software from the supplier and save it in your PC. Then click “Browse” button here to find your upgrade software and then click “Update PTZ” button to upgrade.

## 6.4 Alarm Configuration

Alarm configuration includes six submenus: Motion Detection Area, Motion Detection Trigger, Motion Detection Schedule, Alarm Input Trigger, Alarm Input Schedule and Alarm Out.

### 6.4.1 Motion Detection Area

1. Enter into “Alarm configuration”→"Motion Detection Area" to see an interface as shown below:



2. Move the "Sensitivity" scroll bar to setup the motion trace sensitivity.
3. Check "Add", press the "Ctrl" button and move mouse to select the motion detection area; Select “Erase” and move the mouse to clear all motion detection area.
4. After you finish settings, press the "Save" button to save the settings.

### 6.4.2 Motion Detection Trigger

1. Enter into “Alarm Configuration”→ "Motion Detection Trigger" to display an interface as below:
2. Check "Enable alarm" check box to activate motion based alarm.

# Chapter 6 Remote Configuration

Motion alarm setting

Enable alarm      Alarm Holding    5 Seconds

Trigger alarm out  
 Alarm out

Trigger snap

Trigger Email  
Receival email address     Attach picture

EMAIL Subject    \_\_\_\_\_  
EMAIL Content    \_\_\_\_\_

Trigger FTP  
Server address         Uploading picture

3. Set alarm holding time.

4. Set alarm trigger options.

**Alarm Out:** If selected, this would trigger the external relay output on detecting a motion based alarm.

**Trigger Snap:** If selected, the system will snap images on an alarm and save them in SD card.

**Trigger Email:** If the email and attach picture checkbox is checked (Email address shall be set first in the Mail config interface), the triggered snap pictures and event will be sent into those addresses.

**Trigger FTP:** If “Uploading picture” is checked, the triggered snap pictures will be sent into FTP server address. Please refer to FTP configuration chapter for more details.

5. Press the "Save" button to save the settings.

## 6.4.3 Motion Detection Schedule

A window will show as below by entering into “Alarm configuration”→ "Motion Detection schedule" menu.

Motion schedule setting

Erase     Add

Week Schedule

Sunday	0	1	2	3	4	5	6	7	8	9	10	11	12	13	14	15	16	17	18	19	20	21	22	23	24
Monday	0	1	2	3	4	5	6	7	8	9	10	11	12	13	14	15	16	17	18	19	20	21	22	23	24
Tuesday	0	1	2	3	4	5	6	7	8	9	10	11	12	13	14	15	16	17	18	19	20	21	22	23	24
Wednesday	0	1	2	3	4	5	6	7	8	9	10	11	12	13	14	15	16	17	18	19	20	21	22	23	24
Thursday	0	1	2	3	4	5	6	7	8	9	10	11	12	13	14	15	16	17	18	19	20	21	22	23	24
Friday	0	1	2	3	4	5	6	7	8	9	10	11	12	13	14	15	16	17	18	19	20	21	22	23	24
Saturday	0	1	2	3	4	5	6	7	8	9	10	11	12	13	14	15	16	17	18	19	20	21	22	23	24

Holiday Schedule

Date: 12/17/2009    Add    \_\_\_\_\_  
Delete

Holiday	0	1	2	3	4	5	6	7	8	9	10	11	12	13	14	15	16	17	18	19	20	21	22	23	24
---------	---	---	---	---	---	---	---	---	---	---	----	----	----	----	----	----	----	----	----	----	----	----	----	----	----

# Chapter 6 Remote Configuration

## Week schedule

Set the alarm time from Monday to Sunday for alarm everyday in one week.

Note: The lengthwise means one day of a week; the rank means 24 hours of a day. Mouse clicks on the pane to set the alarm hours. Green means selected area. Blank means unselected area.

"Add": add the schedule for a special day.

"Erase": delete holiday schedule.

## Day schedule

Set alarm time for alarm in some time of a special day, such as holiday.

1. Select a date at the "Date" pull down list, press "Add" button to add that date to the list box on the right side and then move the scroll bar to set the schedule of that day.

2. Select a date in the list box on the right side, and press "Erase" to remove the schedule on that day.

Press the "Save" button to save the settings.

**Note: Holiday schedule is prior to Week schedule.**

## 6.4.4 Alarm Input Trigger

1. Enter "Alarm Configuration" → "Alarm Input Trigger" to see a screen as shown below:

The screenshot shows the 'Sensor alarm setting' interface. It includes a 'Sensor' dropdown menu set to 'Sensor 1', a 'Sensor Name' text field with 'Sensor1', an 'Alarm Type' dropdown menu set to 'NO', and an 'Alarm Holding' dropdown menu set to '20 Seconds'. There is an unchecked checkbox for 'Enable alarm'. Below these are checkboxes for 'Trigger alarm out' (unchecked), 'Trigger snap' (checked), 'Trigger Email' (unchecked), and 'Trigger FTP' (unchecked). At the bottom, there is an 'Apply settings to' dropdown menu set to 'All' and a 'Copy' button.

2. Select the sensor at the "Sensor" pull down list and set the sensor name and alarm type: NO and NC.

3. Enable alarm and select alarm holding time.

4. Set alarm trigger options. The setting steps are the same with that of motion detection trigger. Please refer to motion detection trigger chapter for details.

5. Apply settings to all by clicking "Copy" button, which can quickly set the same settings for all sensors.

## 6.4.5 Alarm Input Schedule

Enter into "Alarm Configuration" → "Alarm Input Schedule" as shown below:

# Chapter 6 Remote Configuration

1. Select the sensor at the "Sensor" pull down list
2. The following setup steps are similar to Motion Detection Schedule's. Please refer to Motion Detection Schedule chapter for more details

Sensor schedule setting

Sensor: Sensor1 [Erase] [Add]

Week Schedule

Day	0	1	2	3	4	5	6	7	8	9	10	11	12	13	14	15	16	17	18	19	20	21	22	23	24
Sun	[Green bar from 0 to 24]																								
Mon	[Green bar from 0 to 24]																								
Tue	[Green bar from 0 to 24]																								
Wed	[Green bar from 0 to 24]																								
Thu	[Green bar from 0 to 24]																								
Fri	[Green bar from 0 to 24]																								
Sat	[Green bar from 0 to 24]																								

Holiday Schedule

Date: 7/ 1/2013 [Add] [Delete]

Holiday	0	1	2	3	4	5	6	7	8	9	10	11	12	13	14	15	16	17	18	19	20	21	22	23	24
Holiday	[Green bar from 0 to 24]																								

Copy settings

Apply settings to: All [Copy]

## 6.4.6 Alarm Out

1. Enter into "Alarm configuration" → "Alarm output" as shown below:

Alarm out setting

Alarm Out: Alarm out1

Alarm Holding Time: 10 Seconds

2. Select alarm holding time and alarm name at the "Alarm out" and "Alarm holding time" pull down list box respectively.
3. Press the "Save" button to save the settings

## 6.5 Network Configuration

Network configuration includes nine submenus: Port, Wired, Server Configuration, IP Notify, DDNS Config, RTSP, UPNP, Mail Setting and FTP.

### 6.5.1 Port

1. Enter into "Network config" → "Port" to see the interface as shown below:

# Chapter 6 Remote Configuration

Network basic config

HTTP Port	<input type="text" value="88"/>
Data Port	<input type="text" value="9008"/>
RTSP Port	<input type="text" value="554"/>

2. Input port number for IE access in the "HTTP Port" textbox.
3. Input the port number for audio & video transmission in the "Data Port" textbox.

## 6.5.2 Wired

1. Enter into "Network Configuration" → "Wired" to see a tab shown below:

IP Config

Obtain an IP address automatically

Use the following IP address

IP Address	<input type="text" value="192 . 168 . 6 . 23"/>		
Subnet Mask	<input type="text" value="255 . 255 . 255 . 0"/>	Gateway	<input type="text" value="192 . 168 . 6 . 1"/>
Preferred DNS server:	<input type="text" value="192 . 168 . 0 . 1"/>	Alternate DNS server:	<input type="text" value="0 . 0 . 0 . 0"/>

PPPoE Config

PPPoE

User Name	<input type="text" value="075503704728@163.gd"/>	Password	<input type="password" value="*****"/>
-----------	--	----------	--

2. There are two Options for setup IP: obtain an IP address auto by DHCP protocol and use the following IP address, please choose one of options for your requirements.
3. Use the following IP address: display the IP address, subnet mask, gateway and DNS of the device.
4. PPPOE: Manual input the user name and password for dial-up internet.  
Firstly, Login IE clients, enter user name and password of PPPoE, save the setting and exit.  
Secondly, setup IP address change notice. Then the device will dial-up internet automatically.
5. Press the "Save" button to save the settings.

## 6.5.3 Server Configuration

- Enter into "Network Configuration" → "Server Config".

# Chapter 6 Remote Configuration

1. Check “Do you want IP Camera to connect Server.”
2. Check the IP address and port of the transfer media server in the ECMS/NVMS. Then enable the auto report in the ECMS/NVMS when adding a new device. Then input the remaining information of the device in the ECMS/NVMS. After that, the system will auto allot a device ID. Please check it in the ECMS/NVMS.
3. Input the above-mentioned server IP, server port and device ID in the responding boxes. Click “save” button to save the settings.

## 6.5.4 IP Notify

1. Enter into “Network Configuration”→”IP Notify” to see a tab as below.

2. If the “Enable notifying change of IP” is selected, when the IP address of the device is changed, a new IP address will be sent to the appointed mailbox automatically; If “FTP” is selected, when the IP address of the device is changed, a new IP address will be sent to FTP server.

## 6.5.5 DDNS Configuration

1. Enter into "Network Configuration"→"DDNS Configuration" tab as below:

# Chapter 6 Remote Configuration

**Note:** The steps to band a domain name for video surveillance server are as follows. Firstly, register a user name and a password to log on the website of service supplier, and then apply for a domain name online for the server. After that, you can visit the server through inputting the domain name at IE terminal.

2. Press the "Save" button to save the settings.

Please refer to the following table for parameters and instructions of DDNS configuration.

<i>Parameter</i>	<i>Meaning</i>
<i>DDNS server</i>	Address of the website which provided by domain name supplier. The optional: <a href="http://www.dns2p.net">www.dns2p.net</a> , <a href="http://www.88ip.net">www.88ip.net</a> , <a href="http://www.meibu.com">www.meibu.com</a> , <a href="http://www.dyndns.com">www.dyndns.com</a> , <a href="http://www.no-ip.com">www.no-ip.com</a> , <a href="http://www.3322.org">www.3322.org</a> and <a href="http://mintdns.type">mintdns type</a> .
<i>User name</i>	Log in the website of domain name supplier
<i>Password</i>	Log in the website of domain name supplier

## 1. Apply the Domain Name (Take dns2p for example)

### (1) Register in the Web


The screenshot shows a 'Register' dialog box with the following fields and values:

- User ID: abc \*
- Resolve Type: mongline \*
- Password: \*\*\*\*\* \*
- Confirm Password: \*\*\*\*\* \*
- Name: (empty)
- City: (empty) \*
- Country: Philippines \*
- Company Name: (empty) \*
- E-mail: (empty) \*
- Address: (empty)
- Code: (empty)
- Tel 1: (empty) \*
- Tel 2: (empty)

Buttons: register, reset

**Register dialog box**

Step 1: Fill in the blank of IE address with 'www.dns2p.com'.

Step 2: Click  to enter the website.

Step 3: Click "New User" in the right of homepage to register. For example: User ID is 'abc', and password is '123456'. The register dialog display as above.

### (2) Login

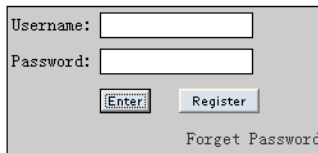
Step 1: Return to homepage after successful registration.

Step 2: Click "Account Manager" on the right of homepage to login.

Step 3: Input the username and password with the information that you have registered.

Step 4: Click "Enter" key after filling in the textbox.

# Chapter 6 Remote Configuration



A login form with a grey background. It contains two text input fields: 'Username:' and 'Password:'. Below the 'Password:' field is a small button labeled 'Enter'. To the right of the 'Enter' button is a larger button labeled 'Register'. Below the 'Register' button is a link labeled 'Forget Password'.

**Log in**

## (3) Domain Setup

Step 1: Click "Domain Management" on the left to set the domain.



A domain setup form with a blue header. It contains a text input field with 'www.' followed by a dropdown menu showing '.dns2p.com' and a 'Submit' button.

**Domain setup**

Step 2: Input the domain in the textbox. For example, you set 'IP-CAMERA' as the domain.

Step 3: Click "Submit" button, the system will pop up a dialog box to show that the domain is added successfully.

## 2. Setup in the IP-CAMERA

### (1) DOMAIN

Domain is set in '1. Apply the Domain Name'. According to the example above, the domain is 'WWW. IP-CAMERA.dns2p.com'.

### (2) USER ID

Username of registered which is set in '(1) Register in the Web'. According to the example above, user ID is 'abc'.

### (3) PASSWORD

Password is set in '(1) Register in the Web'. According to the example above, password is '123456'.

Note: If the connection fails, press the "INFO" button. Now the system will display: 'DDNS NONE'. Then you need to check network and information above and try again.

## 3. Application

Connect IP-CAMERA to the Network Client. Enter into DDNS configuration interface from IE login, check "Enable DDNS", choose the DDNS server, like "www.dns2p.com" and then input the username and password applied above. After that, click "Save" button to save the settings. Next, enter the domain name in the IE browser bar to access the device. If the device is in the local network, please forward your IP address and http port in the router prior to login.

## 6.5.6 RTSP

Enter into "Network Configuration" → "RTSP" interface as shown below:



# Chapter 6 Remote Configuration

RTSP

Enable RTSP server

RTSP Port

RTSP Address

Enable anonymous viewer login (no user name or password required)

1. Select “Enable RTSP server.”
2. RTSP Port: Access Port of the streaming media. The default number is 554.
3. RTSP Address: The RTSP address you need to input in the media player.
4. Check “enable anonymous viewer login...”.

Application: This device supports VLC player. You should download the VLC player from the relevant website. Then choose “File” in the menu bar of the player and click “Open URL”. Input the RTSP address in URL column and click “OK” button. Now, you can see the live image in the VLC player.

## 6.5.7 UPNP

Enter into “Network Configuration”→ “UPNP” interface as shown below:  
Select “Enable UPNP” and then input friendly name.

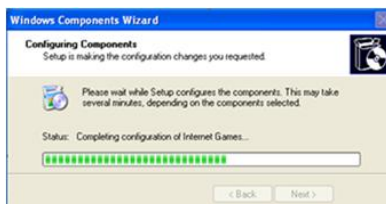
UPNP Setting

Enable UPNP

Friendly Name

### Enable UPNP

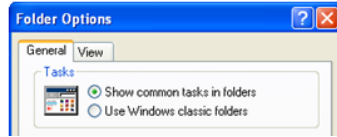
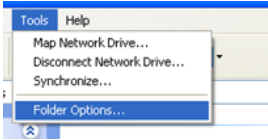
Double-click the “My Network Places” icon on the desktop in PC and select “Show icons for networked UPnP devices” in the “Network Tasks” list box. Then an information window will pop up. Click “YES” button to see a “Windows Components Wizard” dialog box as shown below. Then press “Next” to continue. After the installation of configuring components is complete, the UPnP icons will display. Double-click the icon to connect the remote surveillance login interface through IE.



# Chapter 6 Remote Configuration

If “Show icons for networked UPnP devices” can’t display in the “Network Tasks” list box, please follow the below operation:

- Click “Tools”-- “Folder options”
- Check the “Show common tasks in folders” in the “Tasks” check box, UPnP icon will display.



## 6.5.8 Mail Setting

Enter into “Network Configuration” → “Mail Setting” interface. Please refer to below picture.

A screenshot of the 'Mail config' interface. It contains several input fields: 'From Email' (test10007@gmail.com), 'User Name' (test10007@gmail.com), 'Password' (masked with asterisks), 'Server address' (smtp.gmail.com), and 'SMTP Port' (465). There is a 'Secure Connection' dropdown menu set to 'not required' and a 'test your account settings' button. Below these is a section for 'Receive email address:' with a list box and 'Add' and 'Delete' buttons.

1. From Email: sender’s e-mail address
2. User name and password: sender’s user name and password
3. Server address: SMTP name of sender
4. Select the secure connection type at the Secure Connection pull down list according to user’s actual needs
5. Receive email address list: add email address into the list
6. Receive email address: receiver’s e-mail address
7. After all parameters setup, user can click “Test your account settings”. If email sent successful, a “Test Successful” window will pop up, if not, users can try other email addresses or check the setting.

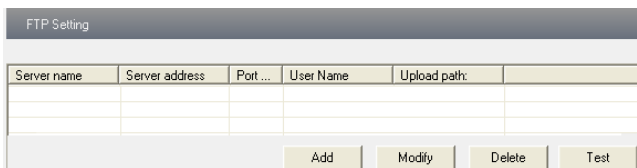


**Note:** If you change the static IP into PPPoE and select mailbox, there will be an e-mail sent to users’ mail box for notifying a new IP address.

## 6.5.9 FTP

Enter into Network Configuration → FTP interface; please refer to below picture.

# Chapter 6 Remote Configuration



1. Add: Click Add button to input FTP server's server name, address, port number, user name, password, and upload path, click OK to confirm the setting. Refer to the following picture:

Modify: You can click this button to change some information of the FTP server

Delete: Select certain FTP account; Click this button to delete this account

Test: Select certain FTP account; Click this button to test its valid or not.

Please refer to the following table for parameters and instructions of FTP configuration.



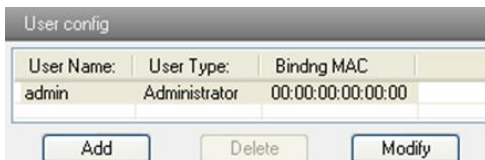
<i>Parameter</i>	<i>Meaning</i>
<i>Server name</i>	The name of the FTP server
<i>Server address</i>	The address of the FTP server
<i>Port</i>	The port number of the FTP server
<i>User name</i>	The user name of the FTP server
<i>Password</i>	The password of the FTP server
<i>Path</i>	The save path for FTP files

## 6.6 Advanced Configuration

Advanced configuration includes six submenus: User Configuration, Onvif Configuration, Security Configuration, Configure Backup & Restore, Reboot and Upgrade.

### 6.6.1 User Configuration

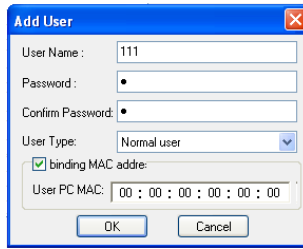
Enter into "User Configuration" interface. Refer to the following picture:



#### Add user:

1. Clicking "Add" button pops up "Add user" dialog box as shown below:

# Chapter 6 Remote Configuration

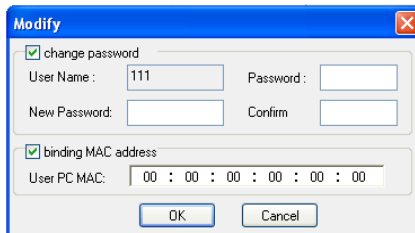


After binding physical address to the IP-CAM, you can access the device on this PC only. If the MAC address was ““00:00:00:00:00:00” which means it can be connected to any computers.

2. Input user name in "User Name" textbox (only letters).
3. Input characters in "Password" and "Confirm Password" textbox (letters or numbers).
4. Input the MAC address of the PC in "Binding MAC address" textbox.
5. Click “OK” button and then the new added user will display in the user list.

### Modify user:

1. Select the user which needs to modify password and physical address in the user configuration list box.
2. Clicking “Modify” button will pop up “Modify user” dialog box as shown below.



3. Input original password of this user in the “password” text box.
4. Input new password in the “New password” and “Confirmation” text box.
5. Input computer’s physical address which is used to access the server in the “User PC MAC” text box.
6. Click “OK” button to modify user’s password and binding MAC address successfully.

### Delete user:

1. Select the user which needs to delete in the user configuration list box.
2. Clicking “Delete” button will pop up a confirm dialog box. Then click “OK” to delete the user.

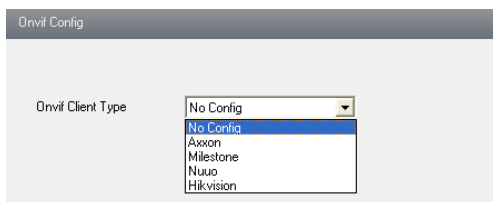
**Note:** The default super administrator cannot be deleted.

# Chapter 6 Remote Configuration

Parameter	Meaning
User Name	User name to operate the logon client end
User Type	Type of users, normal user, advanced user and super administrator
Binding MAC address	The MAC addresses of user access the server which should setup according to actual MAC address of server.
Password	Password to log in the client terminal
Confirm Password	Password to log in the client terminal

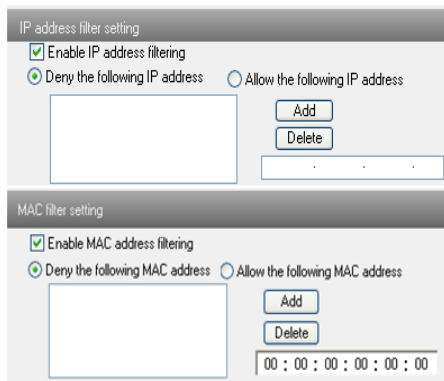
## 6.6.2 Onvif Configuration

This function is mainly used for connecting our device through other companies' monitoring platform software, such as, Hikvision, Axxon, Milestone., etc.



## 6.6.3 Security Configuration

Enter into Advanced Configuration → Security Configuration to see a tab shown below:



Check “Enable IP address” check box, select “Deny the following IP address”, input IP address in the IP address list box and click “Add” button. Then this IP address will display in the list box; the operation step of “Allow the following IP address” is the same with “Deny the following IP address”.

Select the IP address which needs to be deleted from the IP address list box and click “delete” button to delete that IP address.

# Chapter 6 Remote Configuration

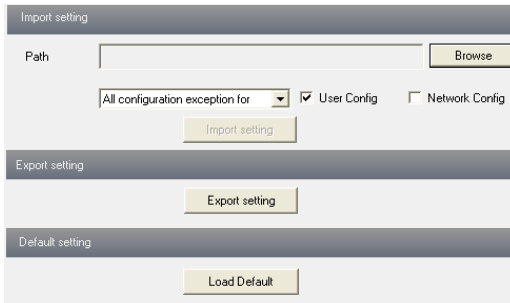
Check “Enable MAC address” check box, select “Deny the following IP address”, input MAC address in the MAC address list box and click “Add” button. Then this MAC address will display in the list box; the operation step of “Allow the following MAC address” is the same with “Deny the following IP address”.

Select the MAC address which needs to be deleted from the MAC address list box and click “delete” button to delete that MAC address.

Click "save" button to save the above setting.

## 6.6.4 Configure Backup & Restore

Enter into Advanced configuration→Configure Backup & Restore Interface.



### ● Import & Export Configuration:

User can import or export the setting information from PC or to device.

1. Click “Browse” to select save path for import or export information on PC.
2. User can import or export all setting information to PC, but those two settings “user configuration” and “network configuration” are exceptional.

### ● Default Configuration

Click “Load default” button to restore all system settings to default status.

## 6.6.5 Reboot Device

Enter into Advanced configuration—Reboot device to see an interface as shown below:

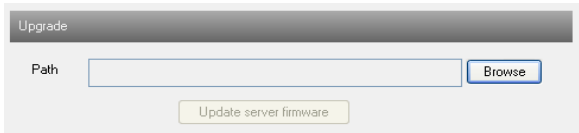
Click “Reboot device” button to reboot the device.



## 6.6.6 Upgrade

Enter into Advanced Configuration—Upgrade interface.

# Chapter 6 Remote Configuration

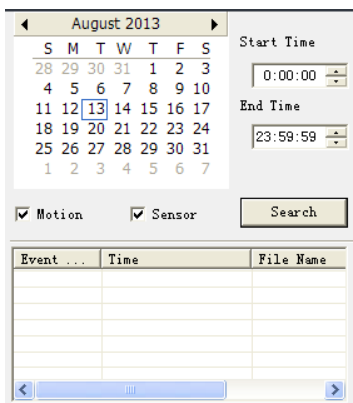


1. Click “Browse” button to select the save path of the upgrade file
2. Click “Upgrade server firmware” button to start upgrading the application program
3. The device will restart automatically
4. After you successfully update the software, click “OK” button to close IE and then re-open IE to connect IP-Cam.

Caution! You can't disconnect to PC or close the IP-CAM during upgrade.

## Chapter 7 Video Search

Click “Picture” icon and search the images which saved in the SD card.











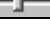


1. Set time: Select date in the “calendar” and choose the start and end time.
2. Choose event “Motion” or “Sensor”.
3. Click “Search” button to search the picture.
4. Double click a filename or select a filename and then click “view” button in the list box to view captured pictures.





# Chapter 7 Video Search

<i>Item</i>	<i>Buttons</i>	<i>Explanations</i>
1		Close: Select certain picture and click this button to close this picture.
2		Close all: Click this button to close all pictures viewing.
3		Save: Click this button to select the save path of the picture file on the PC for saving the current picture.
4		Save all: Click this button to select the save path of the picture files on PC for saving all pictures.
5		Fit size: The picture will fit on screen by clicking this button.
6		Actual size: Click this button to display the actual size of the picture as required.
7		Zoom in: Click this button to amplify the picture.
8		Zoom out: Click this button to zoom out the picture.
9		Slide play: Click this button to play the picture in slide show mode.
10		Stop: Click this button to stop slide show
11		Play speed: Play speed of the slide show

## Chapter 8 Mobile Surveillance

This IP-CAM supports mobile surveillance by phones with Windows mobile, iPhone, Android and Blackberry OS. Please check the operation system version of mobile before use; and connect the IP-CAM to Internet.

### 8.1 Network Configuration

#### ● Access device via LAN

**Step 1:** Connect device via wireless router. Then checkmark DHCP both in router and device to automatically acquire IP address or enter the IP address manually.

**Step 2:** Use WIFI function in your mobile phone to connect the wireless router.

**Note:** Make sure your phone network and device network are in the same network segment on LAN.

**Step 3:** Add the IP address and port in the mobile phone surveillance client.

#### ● Access device via 3G network

**Step 1:** Set the device network. Please enter Main Menu→Setup→Network tab.

▶ If you use PPPoE to connect device, please enable PPPoE and input username and password received from you ISP in network tab. Then click “Apply”. You can enter Main Menu→Information→Network tab to see the IP address. If you want to utilize dynamic domain name, please apply for a domain name in a DNS server supported by the device.

▶ If you have a static WAN IP address, please enter Main Menu→Setup→Network tab to input your IP address, gateway and port.

▶ If you use LAN IP address, please enter Main Menu→Setup→Network tab to input your IP address, gateway and port and then forward IP address and port number in virtual server setup of the router or virtual server(If you has enabled the UPnP function in both the device and router, you can skip this step). Port forwarding setting may be different in different routers and servers. Please refer to the router’s manual for details. After you forward your LAN IP address and port, please check the WAN IP address in the router or server.

**Step 2:** Add the WAN IP address or domain name in mobile phone surveillance client.

### 8.2 By Phones with iPhone OS

#### 1. Install through Iphone.

Step 1: Open App Store software as shown in the figure on the left.

Step2: Search “SuperLive Pro” and click “Free” button as shown in the figure on the right.

# Chapter 8 Mobile Surveillance



Step 3: Click “Install App” button as shown in the figure on the left.

Step 4: Input iTunes Store password and then click “OK”. The software will be installed automatically.



## ◆ Install Software through PC

Step 1: Install iTunes store in PC and then login.

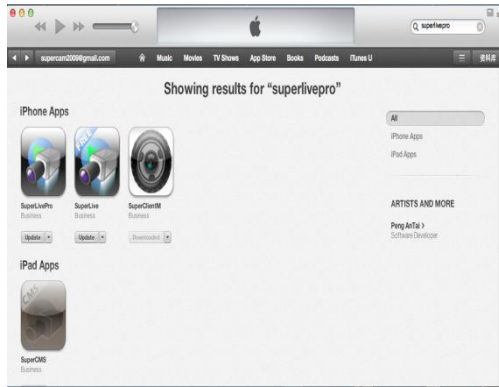


Step 2: Connect iPhone and PC.

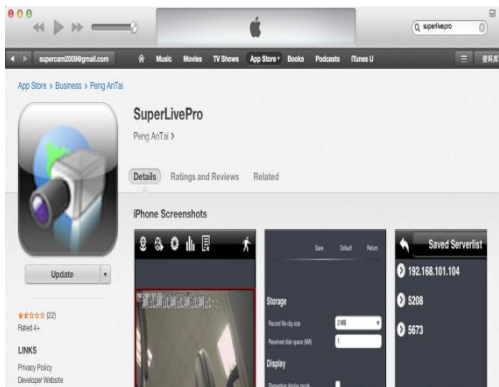
# Chapter 8 Mobile Surveillance



Step 3: Search “SuperLivePro” and select it.



Step 4: Click “Download” button.



Step 5: Input username and password.

# Chapter 8 Mobile Surveillance

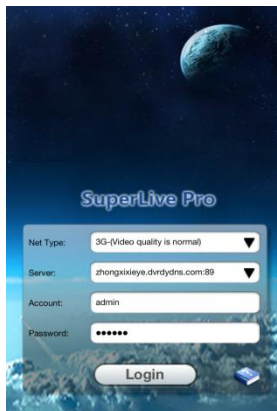


Step 6: Synchronously apply SuperLivePro software to iPhone/iPad.



## ◆ SuperLivePro Instruction

### 1. Login



# Chapter 8 Mobile Surveillance

**Step 1:** Choose network type. There are two network connection ways:

3G/3G+WIFI, well video quality. This network supports main stream and sub stream. The real-time image will be displayed by using sub stream.

3G-, poor video quality contrast to the above mentioned network. ▼

**Step 2:** Input server, account and password.

**Server:** WAN IP address (or domain name) plus HTTP port of the device. For example: 210.21.183:89 or 123.dvrtydns.com:89.

**Note:** The default http port of the device is 80. If this port is modified, please use the modified port.


**Account and Password:** The login account and password of the device. The default account is admin and the default password is 123456.


**Step 3:** Click **【Login】** button to access the device.


## 2. Main Interface




There are many buttons in the main interface, such as, screen mode, favorite channel, snap, record, open/close audio, talk, PTZ., etc.

 : Image view button. The pictures snapped in the live will be checked by clicking this button.

 : Playback button. Click this button to enter into playback interface.

 : Settings button. Click this button to set local configuration (Some can also support remote configuration).

 : Information button. Click this button to check lots of information including local information, device information, network information, etc.

 : Server list button. Click this button to add server list.

# Chapter 8 Mobile Surveillance



: Help button. Help you know about the use of this software quickly.



: CMS button. Make you preview the live image of multi-devices.



: Log off button. Click this button to return to the login interface.



: Screen mode button. You can choose 1 , 4 , 6 , 8 , 9 , 13 or 16 screen display mode.



: Favorite channel display button. If you save your favorite channel in the favorite server list, clicking this button will directly play all favorite channels you have saved.



: Snap button. Choose the channel and click this button to capture the channel image.



: Local record button. Choose the channel and click this button to start recording.



: Open/Close audio. Choose the channel and click this button to open/close the audio of this channel.



: Open/Close talk. Click this button to pop up the servers which support talk function.

Select the device to start talking.



: Set video parameter button. Select the channel and click this button to set the video parameters including brightness, hue, saturation and contrast.



: PTZ button. Click this button to pop up PTZ control panel.



: Choose bitrate priority or quality priority according to your network condition.

Channel indicator instruction:



: Video loss



: Schedule recording



: Others



: Sensor alarm




: Motion alarm



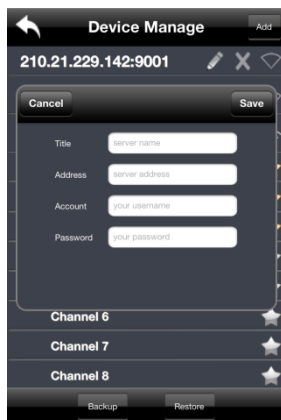
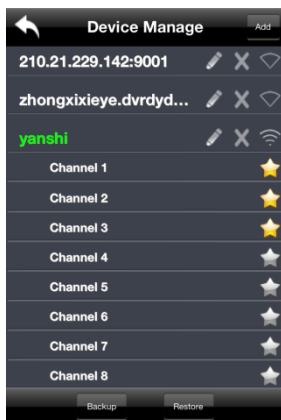
: Motion /sensor alarm based recording or manual recording






### 3. Server list

Click  button to pop up the following picture.

➤ Add device: Click **【Add】** button in the top right corner to pop up a dialog box as shown in the following left picture. Input the relative information of the device and click **【Save】** button.

# Chapter 8 Mobile Surveillance



- Delete device: Click  button behind the device name to delete this device.
- Edit device: Click  button behind the device name to edit the information of this device.
- Backup & restore: It is recommended to click **Backup** button to reserve the information of all devices. Then you can click **Restore** button to restore all device information after you re-install the client or delete the device uncarefully.
-  indicates the device has been connected;  indicates the device is connecting;  indicates the device is not connected.

## 4. Live Preview

Once you access the device, the system will automatically display the screen mode in accordance with the channel number of the device

**Note: The maximum number of channels which can be connected are nine after login.**

- Click “Screen mode” button to select channel as shown in Fig 1.
- When there is video playing in a screen, you can switch the channel by long pressing the screen as shown in Fig 2.
- When no video is playing in a screen, click this screen to choose channel as shown in Fig 3.
- When the single channel is playing, you can zoom in/out the image by swiping your finger up and down as shown in Fig 4.
- When the single channel is playing, the channel can be switched by swiping your finger left or right as shown in Fig 5.
- When multi channels are playing, drag one channel screen to the other channel screen. This will make these two channels change the position of each other.



# Chapter 8 Mobile Surveillance

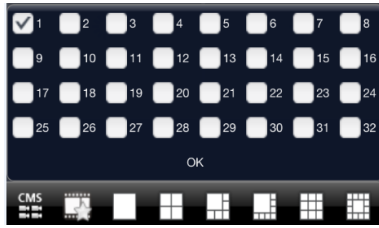


Fig 1

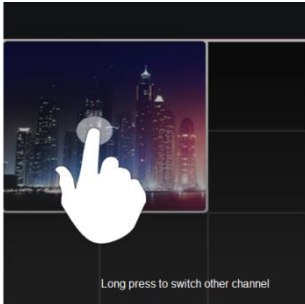


Fig 2

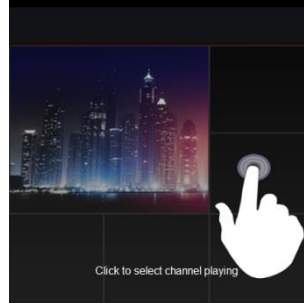


Fig 3

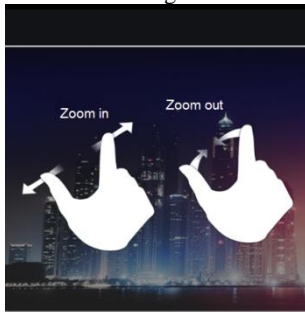


Fig 4

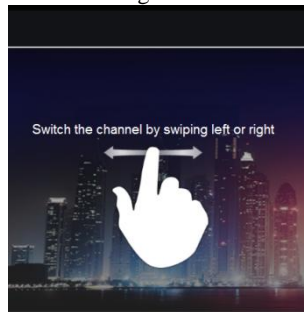

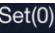


Fig 5

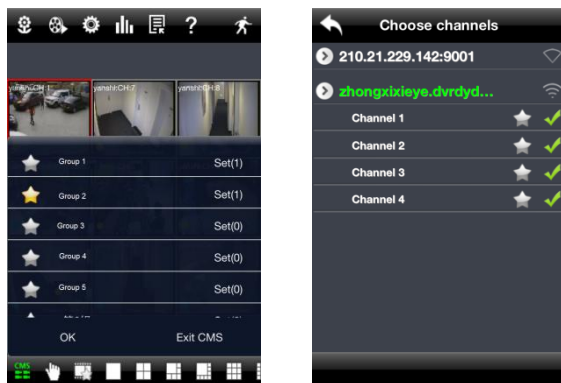
## 5. CMS Function


This function makes multi-device managements and preview come true.

**Step 1:** Click  to enable CMS function. When this icon turns green, it means this function is enabled.

**Step 2:** Click  to choose channel as shown in the right picture. After you choose the channel, click **【ok】**, the system will display the related image automatically.

# Chapter 8 Mobile Surveillance




- If channels have been added into the group, you can see the images by clicking the group name.
- On viewing the group channel images, click  button and select channels to check other channel images.
- Click **【Exit CMS】** to exit CMS mode and return to the main interface of the device.

## 6. Favorite Channel/Group

There are two kinds of favorite channels: favorite channels of the device and favorite group of CMS.


### ● Favorite channels of the device



**Step 1:** Click  to enter into device management list. Click the device name to extend channel. Enlighten the channels to save favorite channels as shown in the following picture on the left.

**Step 2:** Return to the main interface and click  button to play the favorite channels.

### ● Favorite groups of CMS

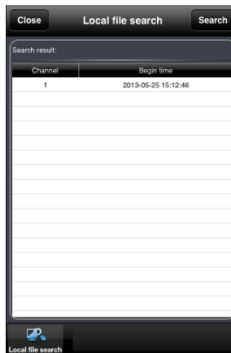
Enable CMS function and enlighten the group to save the favorite groups as shown in the following picture on the right.

Then click  button to play. Only one favorite group can be collected.


  : Color means the channel or group has been collected. Grey means the channel or group isn't collected.

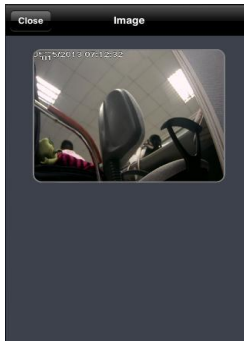
## 7. Playback Interface

Click “Playback” button to enter the playback interface. Then click “Search” button to search the file. To play the record by click this file name.



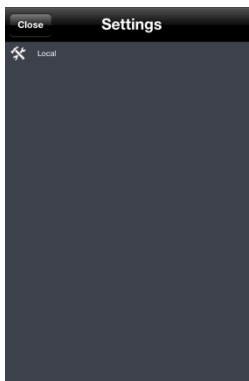
## 8. Image View

Click  button to view the captured pictures.



## 9. Settings Interface

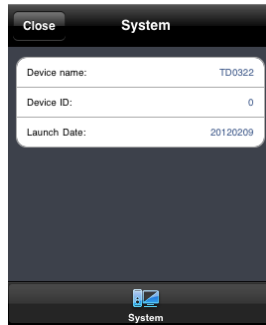
In this interface, you can configure the local settings.



## 10. Information Interface

# Chapter 8 Mobile Surveillance

In this interface, you can view system information.

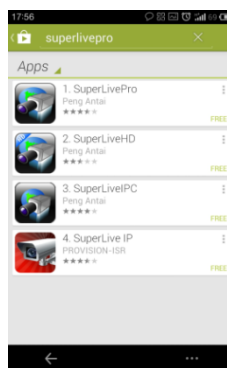
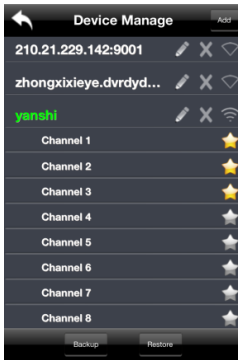


## 8.3 By Phones with Android OS

### Software Installation

**Step 1:** Run “Play Store” (or Google market) program.

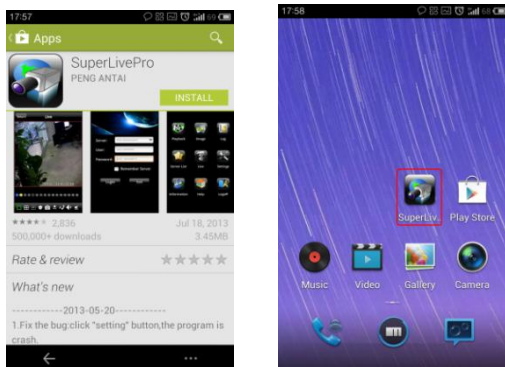
**Step 2:** Search “SuperLivePro”.



# Chapter 8 Mobile Surveillance

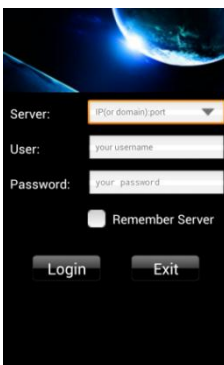
**Step 3:** Press “Install” button.

**Step 4:** Install the software subject to the notes. Once the downloading is done, the software will install automatically.



## Login

**Step 1:** Configure the network of your device and mobile phone.



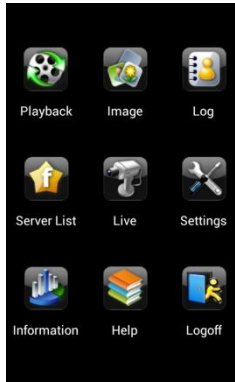
**Step 2:** Input the WAN IP address/domain name and port of your device in the sever column. The port should be HTTP port of your device. The default http port of the device is 80. If you have changed your http port, please enter the new port here. For example: 210.21.228.183:89 or 123.dvrddydns.com:89.

**Step 3:** Input the account and password of your device. The default account name is admin and the default password is 123456.

**Step 4:** Check “Remember Server” to save the setting. When you login next time, you can click ▼ button to select this server for quick access.

## Main Menu

# Chapter 8 Mobile Surveillance

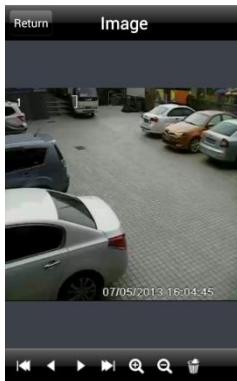


## Live View



	PTZ
	Snap
	Record
	Talk
	Enable/disable audio
	Hide
	Playing favorite channel

## Image View



	The first picture
	The previous picture
	Next picture
	The last picture
	Zoom in
	Zoom out
	Delete

# Chapter 8 Mobile Surveillance

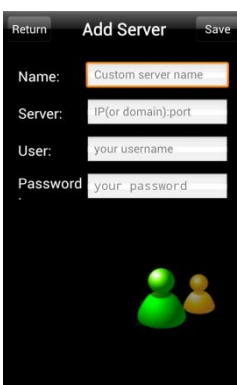
## Record Playback

Click “Playback” in the main menu interface to enter playback interface. Then choose the channel you want to playback. This will take you to see the record file. Click this file to play.




	Pause/Play
	Stop
	Forward
	Backward


## Server List




# Chapter 8 Mobile Surveillance

In the main menu interface, click “Server list” to see the above picture on the left hand.

**Add Server:** Click  button to pop up a window as shown in the above picture on the right hand. Enter the name, server, user and password of the device you want to add. Then click **【Save】** button to save the server. When you log in next time, you can choose and quickly access this server by clicking the little triangle button in the server column.

**Modify Server:** Click  button to modify the server information.


**Delete Server:** Click  button to delete the server information...

## Settings

In the main menu interface, click “Settings” to enter the settings interface where you can configure local settings.

Click “Local” to enter local settings interface. In this interface, you can set favorite channel and storage .



**Favorite Channel:** Check the favorite channels and click **【Save】** button to save these channels. Then go into live interface and click  button to play these favorite channels.

**Storage:** Setup the relevant parameters of mobile video.

## Information View





## Chapter 9 IP-Tool

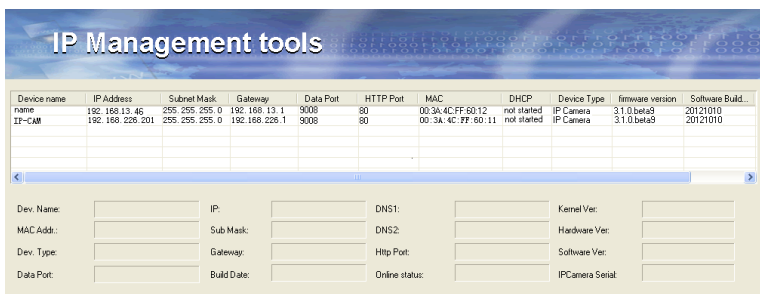
### Updating through IP-Tool

**Note: Do not cut off power supply and internet when updating; If the device is unable to start because of the failure of upgrade, it needs to retrofit.**

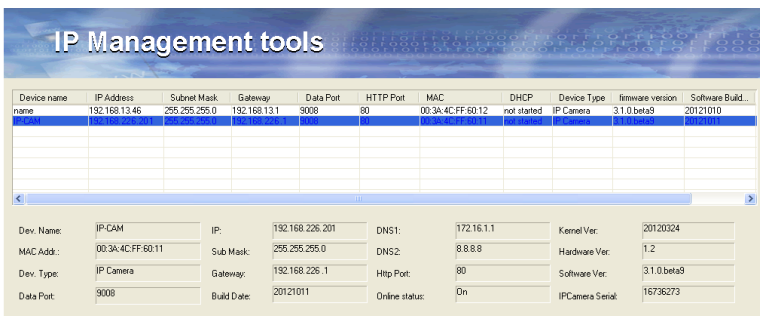
- **Modify IP address**



Acquire the IP-Tool from the supplier and then double click the IP-Tool icon to run this software. Then the device can be searched; if the device can't be searched, please check whether the PC and the device connect to the network or not.

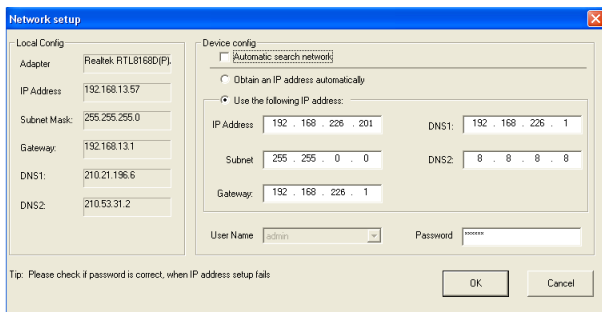


Click the device to check its detail information as shown below:



When upgrading the software and kernel, the IP address of PC and device should be at the same network segment. If the network segment is different, user should change the IP address by right clicking the device and then select "network setup". Modify IP address dialog box will appear as follows:

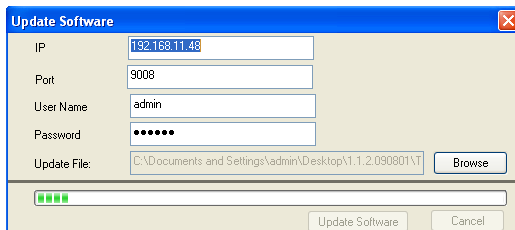
# Chapter 9 IP-Tool



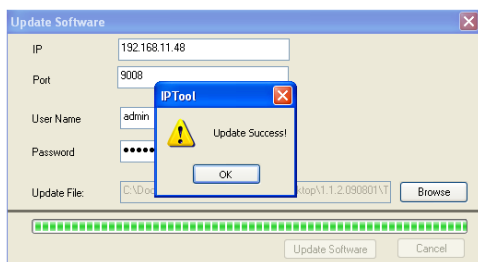
Modify IP address and click OK button to exit the dialog box. After that, IP-Tool will display the new IP address.

## ● Upgrade Software

Select the device; right click “Update software”. Click “Update” to start upgrading, the progress bar will display as below. When upgrading, please do not disconnect PC and the device and make sure the power is on.



After finishing upgrading, a message box will pop up as below:



Click OK button to exit the update dialog box, and then the device will restart automatically. Select the device and right click it to select “Update kernel”. This will bring up a dialog box as below:

# Chapter 9 IP-Tool

Update Kernel

IP: 192.168.11.48

Port: 9008

User Name: admin

Password: •••••••

Update File: C:\Documents and Settings\admin\Desktop\1.1.2.090801\T

Input the relevant information and click “Browse” button to choose your update file. After that, click “Update Kernel” button to start updating. When upgrading, do not disconnect PC to device and make sure the power is on. The update progress bar will display as below:

Update Kernel

IP: 192.168.11.48

Port: 9008

User Name: admin

Password: •••••••

Update File: C:\Documents and Settings\admin\Desktop\1.1.2.090801\T

After finishing upgrading, a message box will pop up. After a while, the device will restart automatically.

## Chapter 10 Q & A

### 1. Q : I forget the password. How can I do?

A: Joint the default line and GND line to reset.

Default IP: 192.168.226.201

User name: admin

Password: 123456

### 2. Q : The devices can't connect through IE browser. Why?

A: ① Network doesn't connect well. Please check the connection and make sure it connected well.

② IP is not available. Reset the valid IP.

③ Web port number has been revised: contact administrator to get the correct port number.

④ Exclude the above reasons. Recover default setting by jointing the default line and GND line.

Note: default IP: 192.168.226.201, mask number: 255.255.255.0

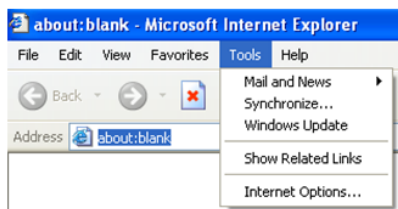
### 3. Q : IP tool cannot search devices. How can I do?

A: It may be caused by the anti-virus software in your computer. Please exit it and try to search device again.

### 4. Q : IE Cannot download ActiveX control. How can I do?

A. IE browser blocks ActiveX. Please do setup following below.

① Open IE browser. Click Tools-----Internet Options....



② select Security-----Custom Level....Refer to Fig 4-1

③ Enable all the sub options under "ActiveX controls and plug-ins". Refer to Fig 4-2

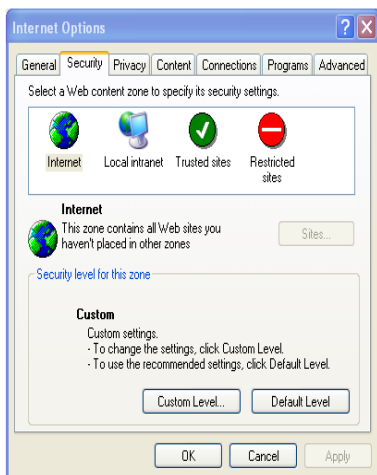


Fig 4-1

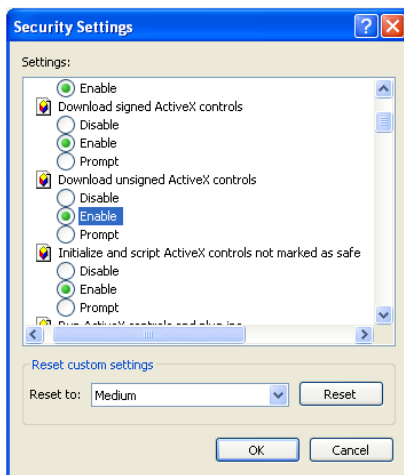


Fig 4-2

④ then click ok to finish setup.

Other plug-ins or anti-virus blocks ActiveX. Please uninstall or close them.

## 5. Q : Why can't the device sound?

A: Without connect audio input device. Please connect and try again.

Without enable audio function at the corresponding channel. Please check AUDIO item to enable this function.

## 6. Q : Why can't the device connect to wireless?

A: Check the statues of wireless router. Please make sure the router is open

Check the router and the device port. Please make the router setup is matched with device port.

## 7. Q: How to do when the device is unable to start normally when upgrading?

If the device is unable to start normally when upgrading, please rename the files suffixed with .tar as updatepack.tar and copy it to the root directory of SD card. Restart the device and then the device will upgrade automatically from the SD card. After finishing upgrading, the user can search the IP address of IP Cam in the IP Tool.

# Chapter 11 Specification

## Chapter 11 Specification

Model	2 Mega Pixel High Speed IP Camera
Image Sensor	1/3" CMOS
Effective Pixel	1920 x 1080
Horizontal Resolution	1000TVL
Low Illumination	0.5 Lux (Day), 0.1Lux(Night), 0.005Lux(DSS ON)
Lens	20xZoom, f = 4.7~94mm, F1.6~F3.5
	12 xZoom, f = 5.3~62.6mm, F1.8~F2.1
Pan Range	360° endless rotation
Pan Speed	Preset speed: 400°/s
Tilt Range	0~90°
Tilt Speed	Preset speed: 400°/s
Preset	255
Patrol	8
Trace	4
Time Task	8
Scan	2
Alarm Input	4 CH
Alarm Output	1 CH
Resolution	1920x1080,1280x720,640x480,320x240,160x120
Frame Rate	Max 30 fps
Storage	SD card local storage, network remote storage
Audio	MIC IN*1 ; MIC OUT*1
Network Protocol	TCP/IP, DHCP, PPPoE, DDNS, SMTP, UPnP , RTSP,NTP
Network Port	10Base-T/100Base-TX, RJ45
Remote Surveillance	IE Browse、 CMS remote control
Online Users	Max 6
Protection Level	IP66 Weather-proof; 4KV lightning protection; surge protection
Power Supply	AC24V
Power Consumption	9W ( max 24W, heater on )
Working Environment	-20 ℃ ~60 ℃, 10%~90% humidity

# Appendix Preset Description

## Appendix Preset Description

Call Preset	Call NO.90 Preset	Run trace 1
	Call NO.91 Preset	Run patrol 1
	Call NO.92 Preset	Run patrol 2
	Call NO.93 Preset	Run patrol 3
	Call NO.94 Preset	Run patrol 4
	Call NO.95 Preset	OSD menu
	Call NO.97 Preset	Enable random scan
	Call NO.99 Preset	Enable P-P SCAN
Set Preset	Set NO. 91 Preset	Set random scan, task auto call the beginning point
	Set NO. 92 Preset	Set left border of P-PSCAN
	Set NO. 93 Preset	Set right border of P-PSCAN